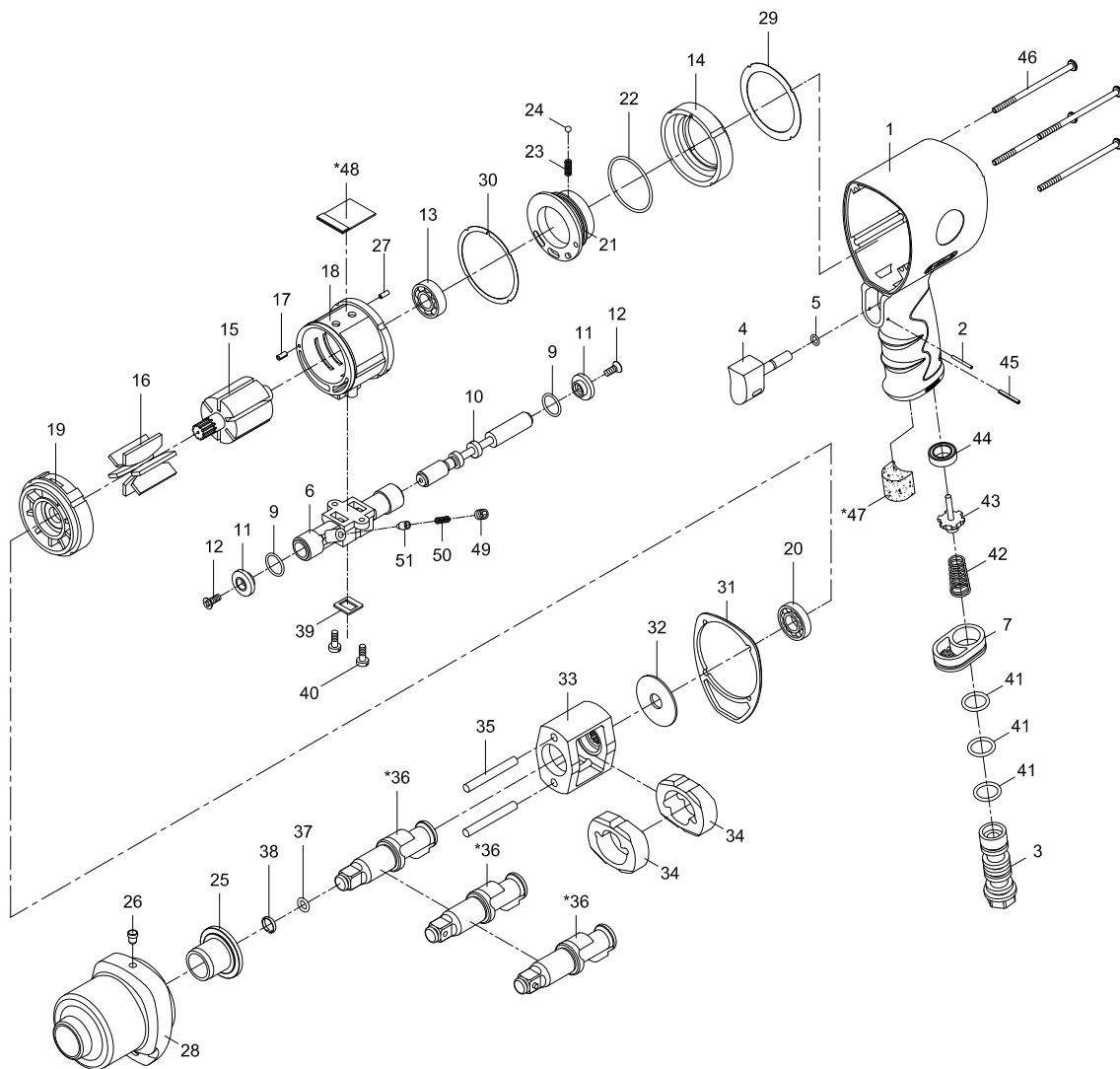


1/2" PROFESSIONAL IMPACT WRENCH



| Index No. | Parts No. | Description | Index No. | Parts No. | Description |
|-----------|------------|------------------------|-----------|--------------|-------------------------|
| 1 | 43-4033P01 | Motor Housing | 28 | 43-403328 | Hammer Case |
| 2 | 62054 | Spring Pin (2x20) | 29 | 43-403334 | Gasket |
| 3 | 43-401203 | Air Inlet | 30 | 43-403336 | Gasket |
| 4 | 43-403204 | Trigger | 31 | 43-403335 | Gasket |
| 5 | OR00400100 | O-Ring (4x1) | 32 | 43-403327 | Washer |
| 6 | 43-403306 | Reverse Valve | 33 | 43-403308 | Hammer Cage |
| 7 | 41-401207 | Exhaust Diffuser | 34 | 43-403111 | Hammer (2) |
| 9 | OR01104103 | O-Ring (2) (11.4x1.25) | 35 | 43-403117 | Hammer Pin (2) |
| 10 | 43-403310 | Reverse Stem Текст | | 43-403102-11 | Anvil (R-Type 1/2") |
| 11 | 41-401229 | Button (2) | *36 | 43-403102-12 | Anvil (RH-Type 1/2") |
| 12 | 61035 | Screw (2) (M3x8) | | 43-403102-13 | Anvil (M-Type 1/2") |
| 13 | 040313 | Ball Bearing (6001) | 37 | 40305 | O-Ring (6.5x2) |
| 14 | 43-403349 | Fixed Ring | 38 | 40303 | Retaining Ring |
| 15 | 43-403315 | Rotor | 39 | 41-401237 | Gasket |
| 16 | 43-403316 | Rotor Blade (6) | 40 | 41-401250 | Screw (2) |
| 17 | 70117-13 | Spring Pin (2.5x5) | 41 | OR01505206 | O-Ring (3) (15.54x2.62) |
| 18 | 43-403318 | Cylinder | 42 | 43-403147 | Valve Spring |
| 19 | 43-403319 | Front End Plate | 43 | 43-403148 | Valve Stem |
| 20 | 072021 | Ball Bearing (EE4) | 44 | 43-403145 | Rubber Spacer |
| 21 | 43-403320 | Air Regulator | 45 | 70102 | Spring Pin (2.5x20) |
| 22 | OR03805200 | O-Ring (38.5x2) | 46 | 43-403330 | Screw (4) (M4x90) |
| 23 | 43-403323 | Spring | *47 | 75-725153 | Muffler Material |
| 24 | 5K-3011B25 | Steel Ball (9/64") | *48 | 43-403351 | Muffler Material |
| 25 | 43-403325 | Anvil Bushing | 49 | 41-401243 | Set Screw (M4x6) |
| 26 | 41-401254 | Oil Cap (1/8") | 50 | 43-403341 | Spring |
| 27 | 70117 | Spring Pin (2x5) | 51 | 43-403342 | Pin |

* Optional Parts

43-4033P-0001